



Biopharmaceuticals and Medical Devices in Southern California

Setting the Stage

LAEDC Institute for Applied Economics



All of NAICS 3254:

Medicinal and Botanical Manufacturing

Pharmaceutical Preparation Manufacturing

Biological Products Manufacturing

In-Vitro Diagnostic Substance Manufacturing

All of NAICS 3391

NAICS 3345:

Electromedical / Electrotherapeutic Apparatus
manufacturing

Analytical Laboratory Instrument Manufacturing

Irradiation Apparatus Manufacturing

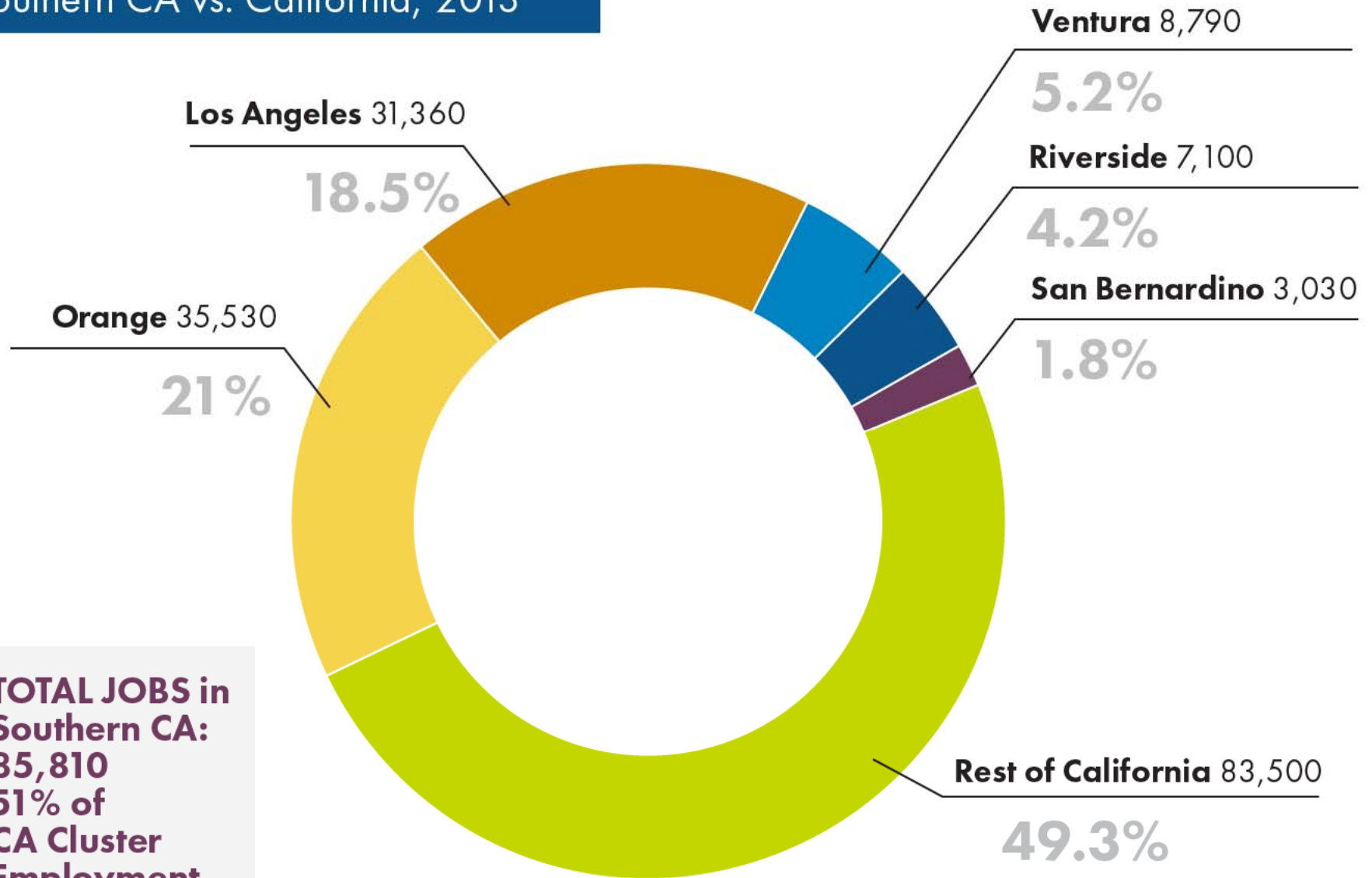
Optical Instrument and Lens Manufacturing

Definitions Matter | **Biomedical Wholesale**

Medical, Dental, Hospital Equipment and
Supplies Merchant Wholesalers

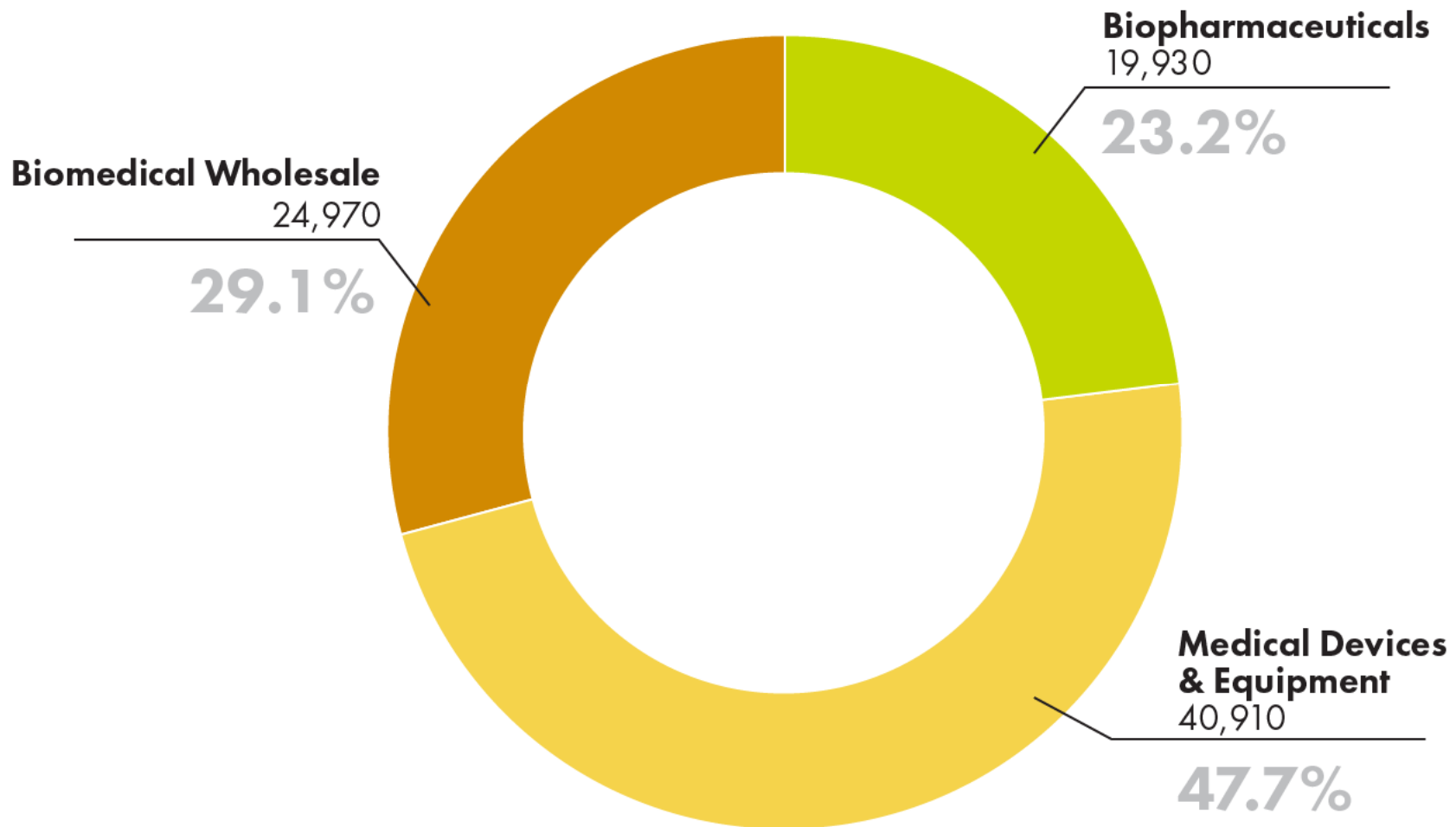
Drugs and Druggists' Sundries Merchant Wholesalers

Total Cluster Employment Southern CA vs. California, 2013

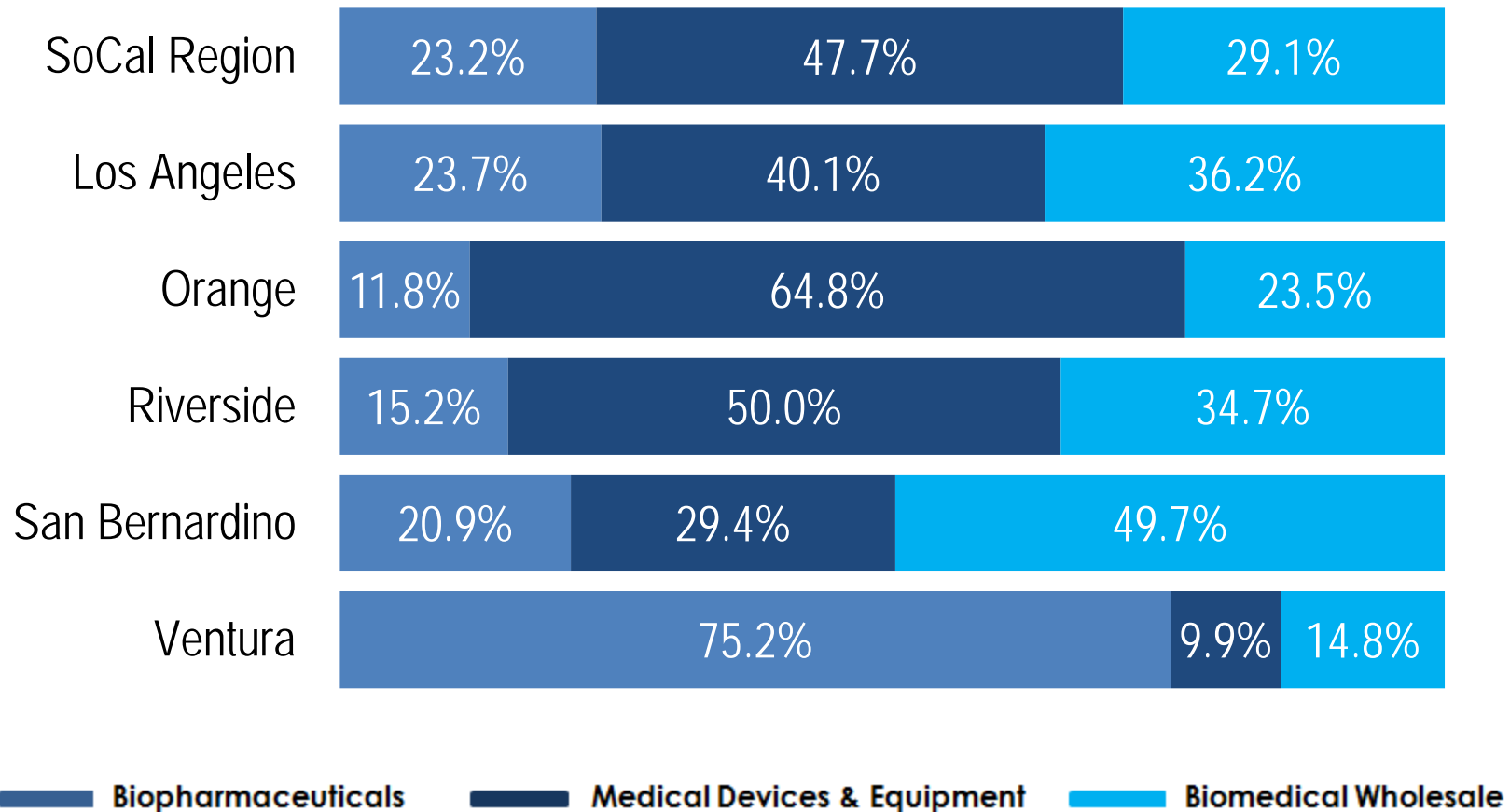


**TOTAL JOBS in
Southern CA:
85,810
51% of
CA Cluster
Employment**

Subcluster Employment Distribution Southern CA, 2013

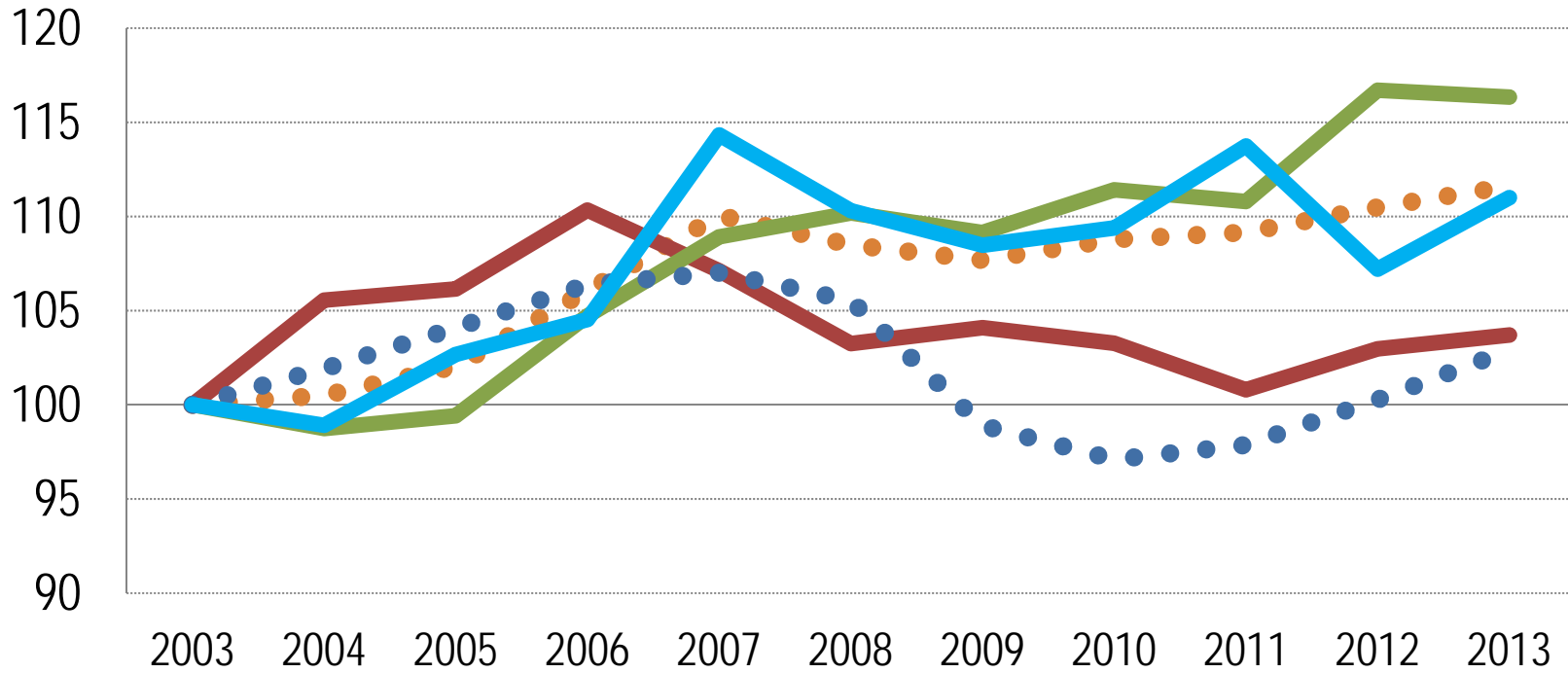


Subcluster Employment by County 2013



Indexed Employment Growth

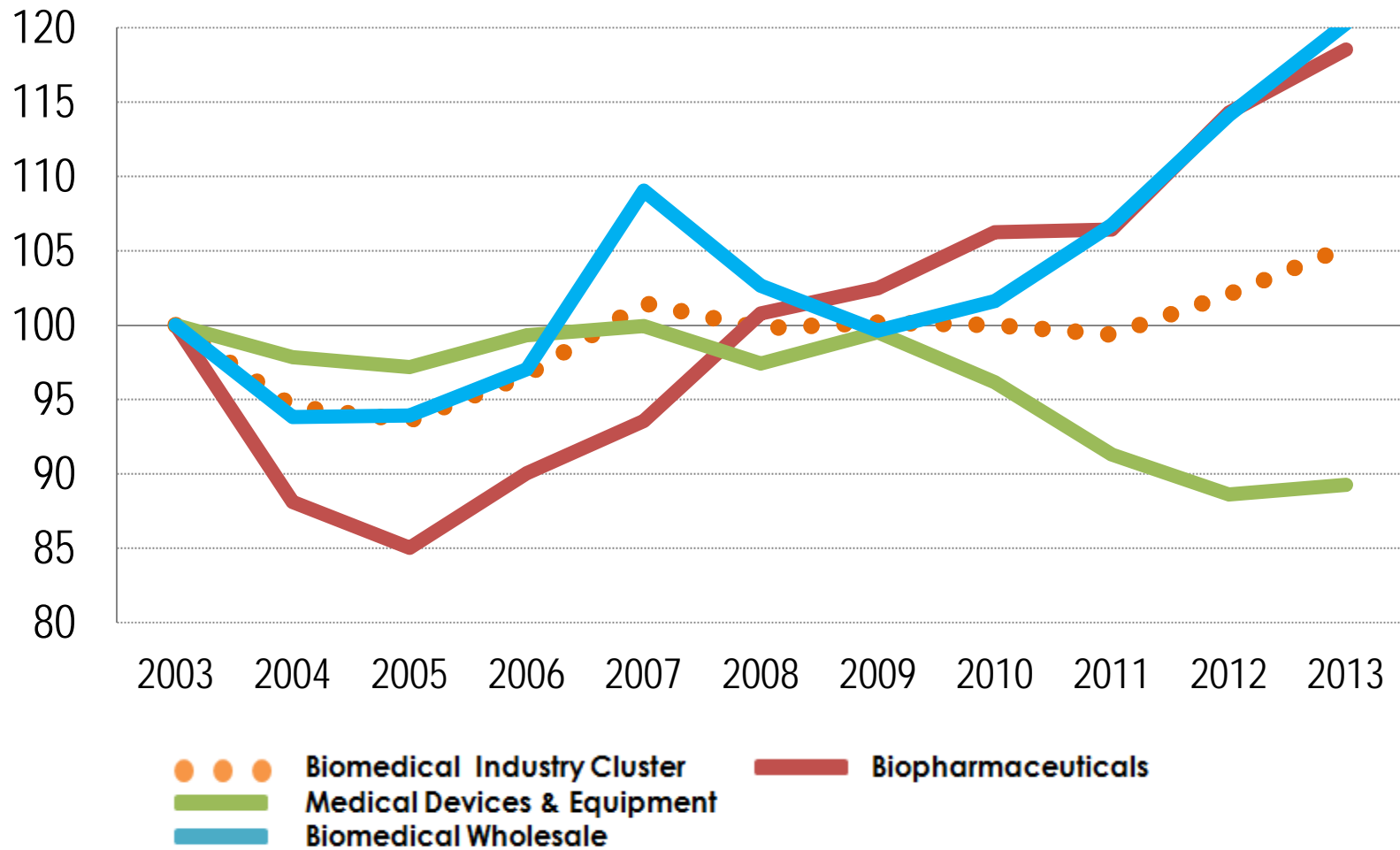
Southern CA (2003=100)



- ● ● Biomedical Industry Cluster
- Medical Devices & Equipment
- Biomedical Wholesale
- Biopharmaceuticals
- ● ● Other Noncluster Industries

Indexed Employment Growth

Los Angeles County (2003=100)



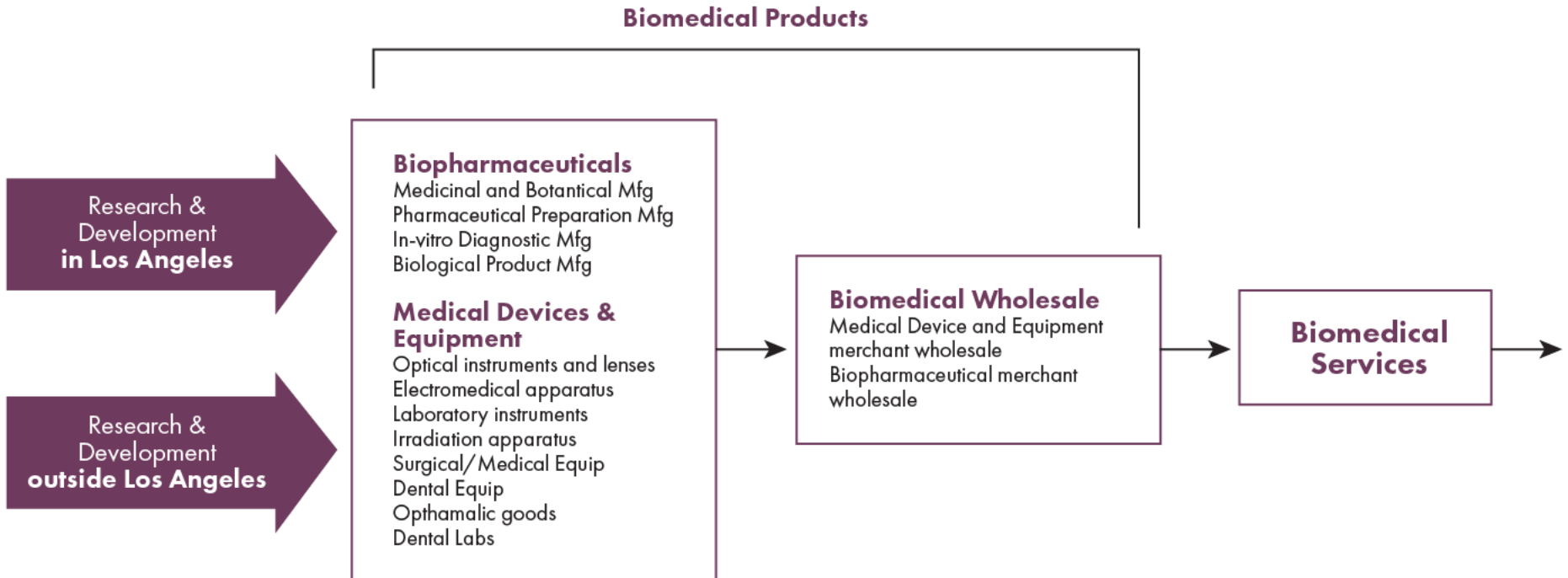


Biomedical Products and Services Sector Los Angeles County

Collaborative Economics

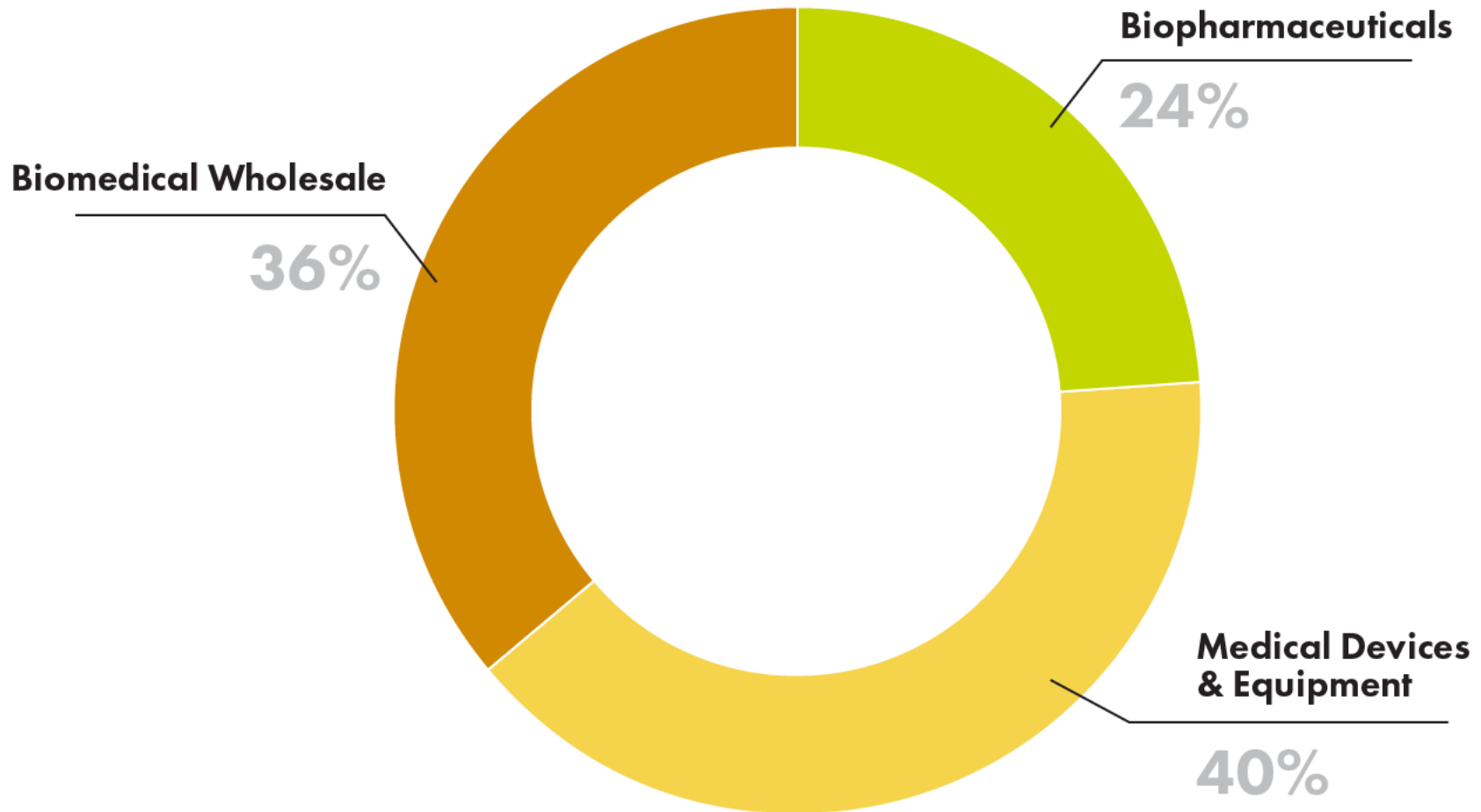


Biomedical Products and Services Sector Value Chain



Biomedical Products Employment

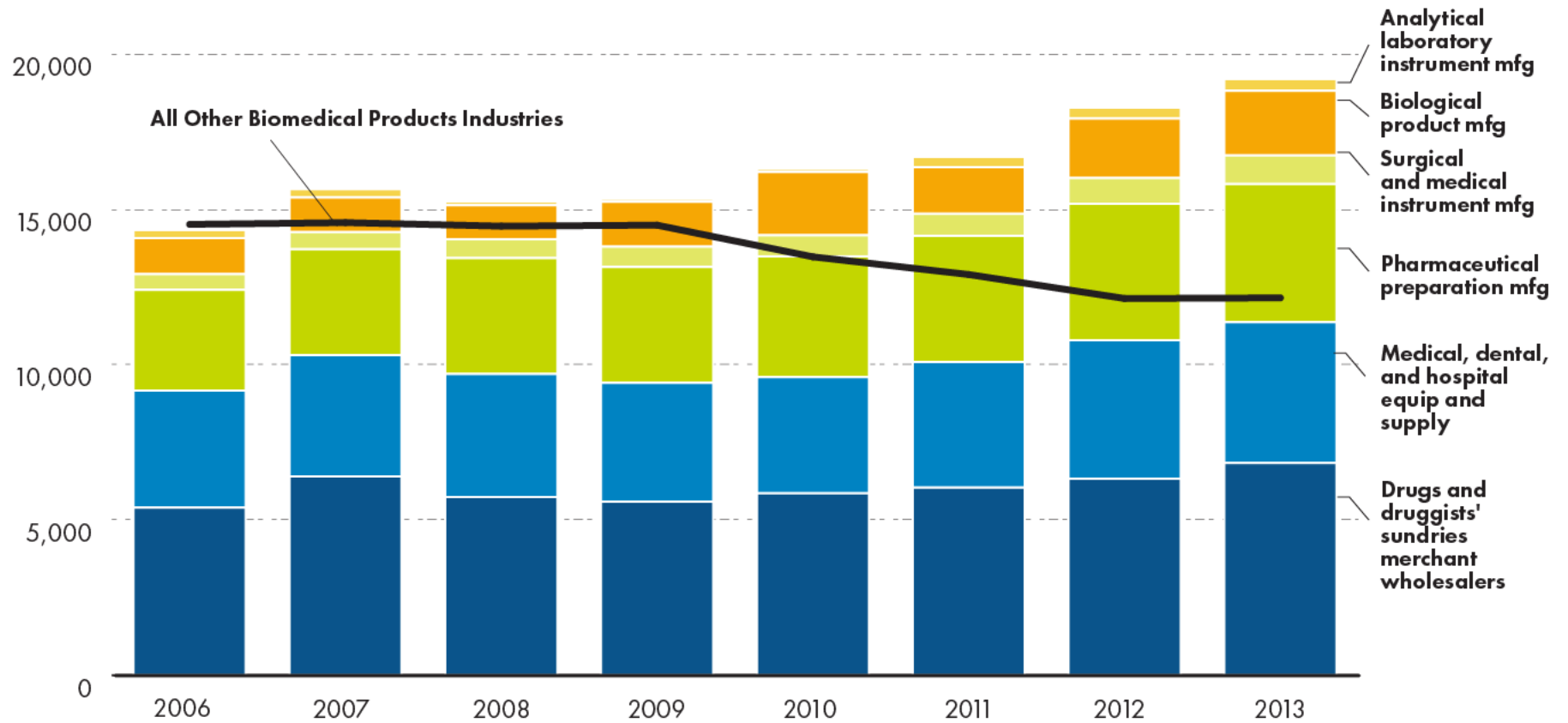
L.A. County, 2013



Data Source: BLS QCEW
Analysis: Collaborative Economics

Biomedical Products Jobs by Growing Segments

L.A. County, 2006-2013



Data Source: BLS QCEW
 Analysis: Collaborative Economics

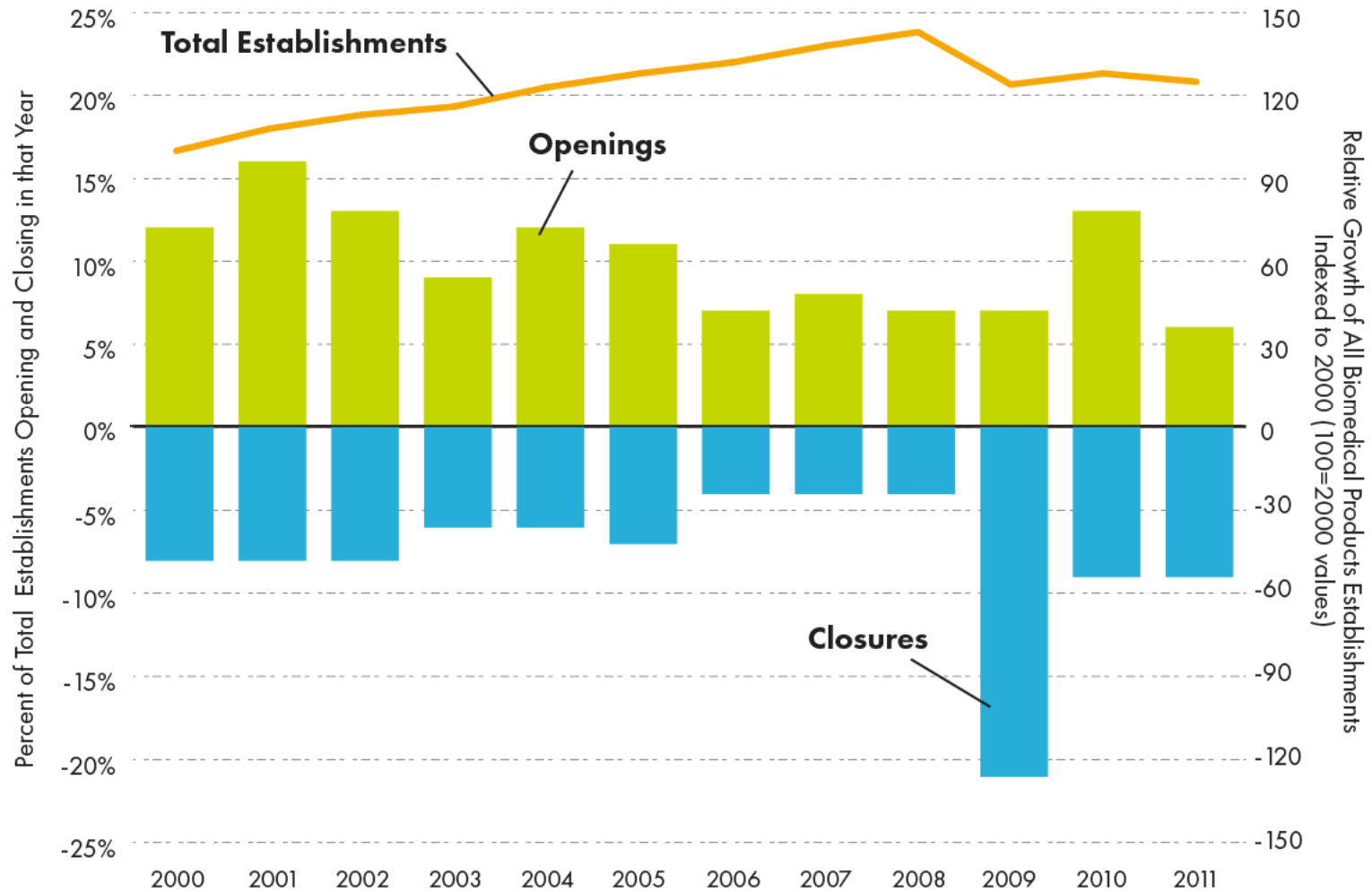
Biomedical Products Growth Industries Change in Employment

L.A. County, 2006-2013

	% Change 2006-2013
Analytical laboratory instrument manufacturing	81%
Biological product manufacturing	78%
Surgical and medical instrument manufacturing	45%
Pharmaceutical preparation manufacturing	37%
Drugs and druggists' sundries merchant wholesalers	27%
Medical, dental and hospital equipment and supplies merchant wholesalers	20%
All Other Biomedical Product Industries	-16%

Biomedical Products Establishment Churn

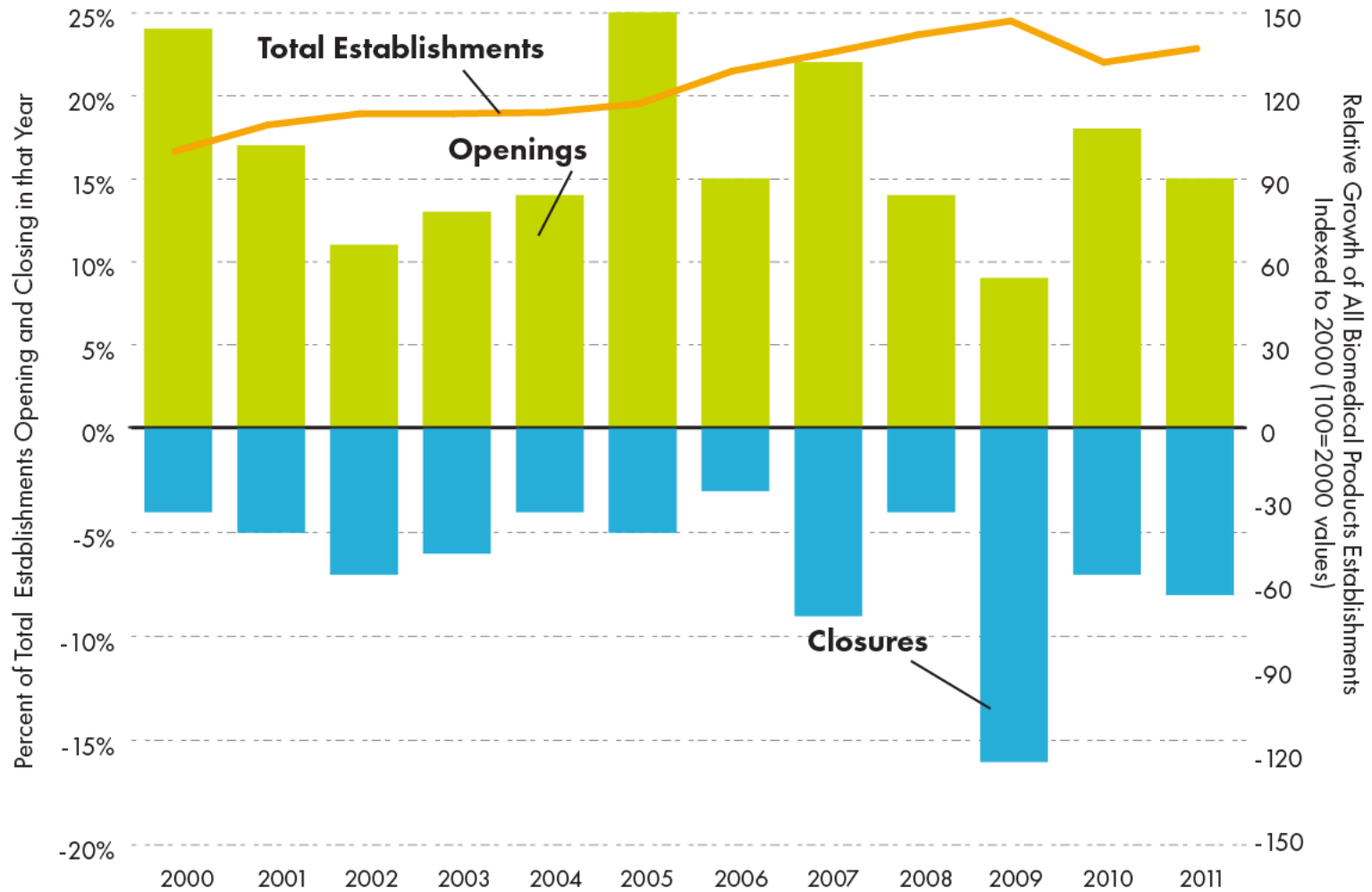
L.A. County, 2000-2011



Data Source: National Establishments Time Series Database
Analysis: Collaborative Economics

Biopharmaceutical Products Establishment Churn

L.A. County, 2000-2011



Data Source: National Establishments Time Series Database
 Analysis: Collaborative Economics

Los Angeles MSA Growing Occupations with Ties to Biomedical Products, 2010-2020

Medical Scientists
Biomedical Engineers
Logisticians

**Medical Equipment
Repairers**
**Industrial Machinery
Mechanics**
Manufacturing Sales Reps

Truck Drivers
**Maintenance and
Repair Workers**
**Shipping and
Receiving Clerks**
Freight and Stock Movers
Packers and Packagers
Store Clerks

Fastest Growing Jobs
Most Openings